

RAILWAY HOUSE
2 REMPSTONE ROAD
SWANAGE
DORSET
BH19 1DW
Opposite the Steam Railway Station



Tel: 01929 423333
(24 hours)
Web: www.milesandson.co.uk
Email: property@milesandson.co.uk



Sandbourne Close, Swanage, Dorset BH19 2LQ

Detached house within a residential cul-de-sac convenient for open country walks. 4 bedrooms, lounge, kitchen/diner, cloakroom/W.C., bathroom/W.C., gas central heating, double glazing, shingled front garden, enclosed rear garden, garage and driveway parking, some sea and hill views.

- Detached house
- Lounge
- Gas central heating. Double glazing
- Some sea and hill views
- Residential cul-de-sac convenient for open country walks
- Kitchen/diner
- Shingled front garden. Enclosed rear garden
- 4 bedrooms
- Cloakroom/W.C. Bathroom/W.C.
- Garage and driveway parking

Asking Price £387,500

Sandbourne Close, Swanage, Dorset BH19 2LQ

SITUATION:

Close to the western outskirts of the town within a residential cul-de-sac convenient for access to open country walks approximately one mile from the main town centre. There are local primary and secondary schools nearby as well as local amenities which include a small supermarket/sub-Post Office.

DESCRIPTION:

A well-presented detached family house built, we understand, in the 1980's of brick elevations under an interlocking tiled roof. Views to the hills and sea are obtained from the rooms at the rear of the property. The open plan front garden offers scope to provide additional parking, and the main bedroom is dual aspect with potential to provide an en-suite bath or shower room.

ACCOMMODATION:

ENTRANCE HALL (E):

UPVC double glazed front door, tiled floor, radiator, central heating thermostat, storage cupboard, telephone point.

CLOAKROOM/W.C.:

Low level W.C., wash basin with mixer tap, tiled splash back, tiled floor, UPVC obscure double-glazed window.

KITCHEN/DINER (S):

14'3" (4.34m) x 8'4" (2.55m). Single drainer stainless steel sink unit with mixer tap, and adjoining work surfaces with cupboards, space and plumbing for washing machine under, small breakfast bar, further work surfaces with drawers, cupboards and appliance space under, space for fridge/freezer, tiled splash backs, wall cupboards, Potterton gas boiler, radiator, tiled floor, gas cooker point, dining space.

LOUNGE (N):

14'8" (4.34m) x 11'10" (3.61m). UPVC double glazed doors to the rear garden, view to the hills and glimpse of the sea, TV aerial point, under stairs storage cupboard, radiator, fireplace with tiled hearth, wooden surround and mantle, fitted gas fire.

FIRST FLOOR

LANDING:

Access to main loft space, airing cupboard housing pre-lagged hot water cylinder.

BEDROOM 1 (S & N):

17'11" (5.47m) x 8'3" (2.53m). Views to the hills, radiator, access to loft space.

BATHROOM/W.C.:

Fully tiled walls, UPVC obscure double-glazed window, panelled bath with mixer tap/shower attachment, low level W.C., wash basin, towel radiator.

BEDROOM 2 (N):

13'10" (4.22m) into alcove x 8'3" (2.53m). View to the hills and Swanage Bay, radiator.

BEDROOM 3 (S):

12'5" (3.8m) x 7'2" (2.2m). Glimpse of the hills, radiator.

BEDROOM 4 (S):

8'9" (2.67m) x 7' (2.15m). Glimpse of the hills, radiator.

OUTSIDE:

Open plan gravelled front garden. Concrete drive providing off road parking leading to: GARAGE: 18'4" (5.6m) x 8'4" (2.54m). Up and over door, electric light and power. Side access to the rear garden which is terraced with the upper part providing patio and decked areas, steps down to the lower level with timber shed, shingled and patio areas, flower and shrub beds.



ADDITIONAL INFORMATION

Property type: Detached. Construction: Standard. Electric supply: Mains. Water supply: Mains. Heating: Mains gas. Broadband: Fttp (checker.ofcom.org.uk/). Mobile signal/coverage: Please see: checker.ofcom.org.uk/

COUNCIL TAX:

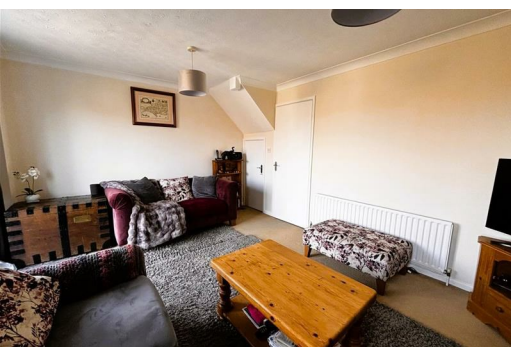
Band D: £2818.07 payable for 2026/27 (excluding discounts).

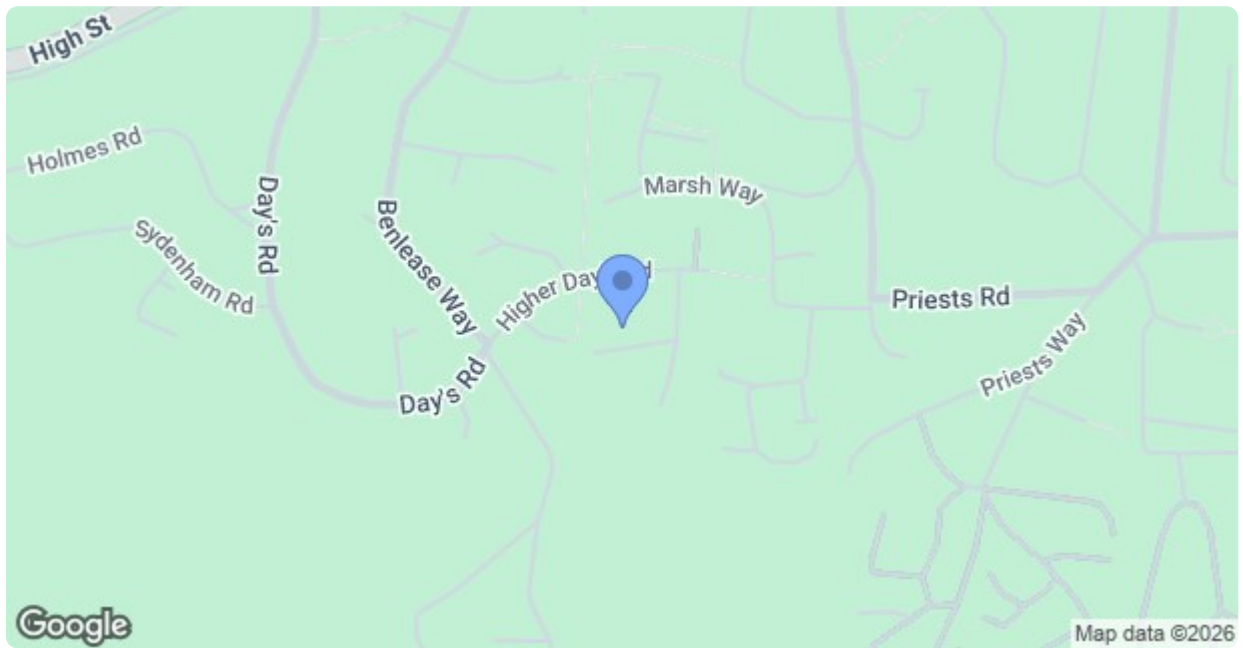
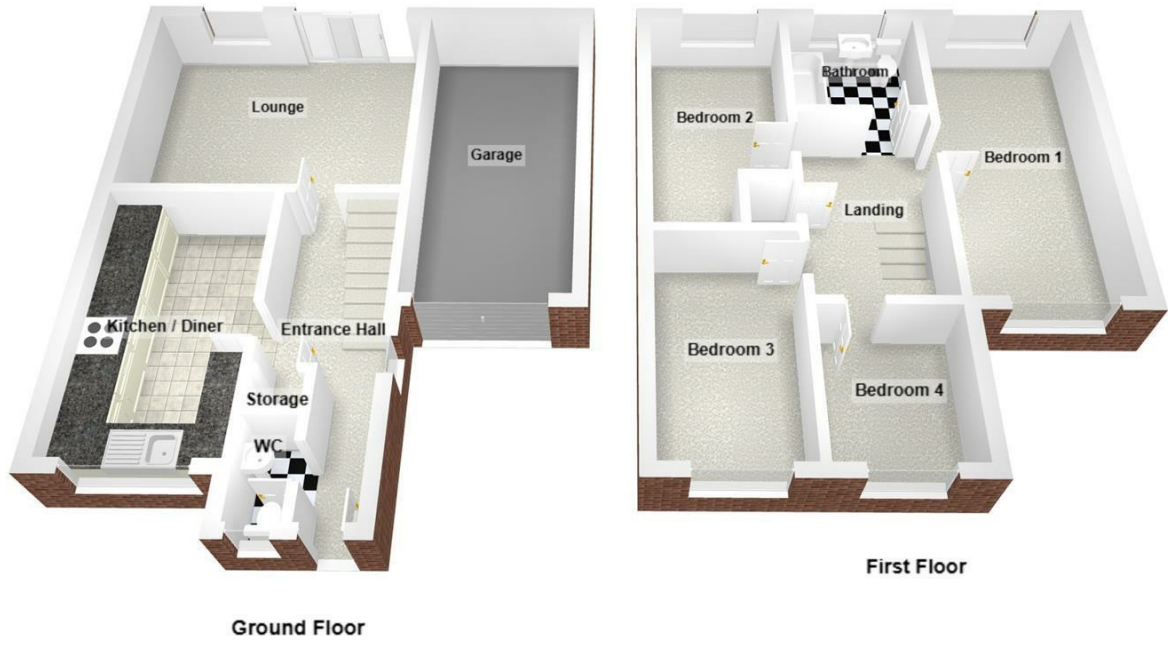
VIEWING:

By prior appointment only please, through the Agents MILES & SON during normal office hours (lunchtimes included).

THE PROPERTY MISDESCRIPTION ACT 1991:

The Property Misdescription Act 1991. These particulars have been prepared to the best of our knowledge and belief in accordance with the Act and they shall not constitute an offer or the basis of any contract. Our inspection of the property was purely to prepare these particulars and no form of survey, structural or otherwise was carried out. Defects and/or other matters may be revealed on a survey carried out on your instructions. Internal measurements and site measurements, where given, are approximate and intended only as a guide as obstacles may well have prevented accuracy. Floor plans are not to scale and are for guidance only. You are advised to check the availability of this property before travelling to view. Any appointment to view should be made, and all negotiations conducted, through Miles & Son.





Energy Efficiency Rating		
	Current	Potential
<i>Very energy efficient - lower running costs</i>		
(92 plus) A		
(81-91) B		
(69-80) C		
(55-68) D		
(39-54) E		
(21-38) F		
(1-20) G		
<i>Not energy efficient - higher running costs</i>		
England & Wales	EU Directive 2002/91/EC	